



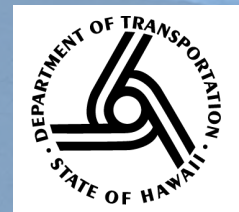
# Honoapi'ilani Highway Improvements

West Maui, Ukumehame  
to Launiupoko

May 30, 2023

[www.HonoapiilaniHwyImprovements.com](http://www.HonoapiilaniHwyImprovements.com)

# Pre-Site Visit Meeting





# Agenda

- **Introductions**
- **Project Overview**
- **Known Historic and Cultural Sites**
- **Project Timeline**
- **Your Input**



# Project Team

## HDOT

### Ed Sniffen

Director, HDOT

### Robin Shishido

Deputy Director of  
Highways, HDOT

### Annette Matsuda

Maui District Engineer,  
HDOT

### Genevieve Sullivan

Project Manager, HDOT

### Ken Tatsuguchi

Planning Program  
Manager, HDOT

### Pua Aiu

Cultural Resource  
Specialist, HDOT

### Brian Tyau

Preliminary Engineering,  
HDOT

### Dean Matsui

Preliminary  
Engineering, HDOT

## FHWA

### Richelle Takara

Division Administrator,  
FHWA

### Lisa Powell

Project Manager,  
FHWA

### Meesa Otani

Environmental  
Specialist, FHWA

### David Clarke

Federal Preservation  
Officer, FHWA

## WSP

### Wayne Yoshioka

Project Manager, WSP

### Peter Liebowitz

EIS Lead, WSP

### Guy Blanchard

Architectural Historian,  
WSP

### Matt Prybylski

Architectural Historian,  
WSP

### Matthew Small

Planner, WSP

### Stephanie Doan

Planner, WSP

### ‘Āina Archaeology

### Tanya Lee-Greig

Lead Archaeologist,  
‘Āina Archaeology





# Why this project?

## Emergency Repairs:

- Over the past 10 years, this stretch of highway has been repaired three times after storms and high waves.
- A fourth project is currently in development to address erosion - near Olowalu.

## HDOT Vulnerability Assessment Findings:

- 2019 Statewide Coastal Highway Report ranks Honoapiʻilani Highway at Olowalu (#2) and Ukumehame (#12) as most critical out of 300 sites for ocean hazard vulnerability.
- 2021 HDOT Climate Adaptation Action Report Exposure Assessments found 3.2-foot Sea Level Rise Exposure; Vulnerability to hurricane-related storm surge; And Hypothetical tsunami scenario identified in the project area.

## Funding Opportunities:

- HDOT has secured a \$22 million federal RAISE grant with the help of our Congressional Delegation, Visitor Industry, FHWA, and Maui County
- Sen. Schatz helped to secure a \$23 million earmark in the 2022 OMNIBUS Bill





# Honoapi'ilani Highway

This project will look at service reliability, resiliency, and safety for roughly 6 miles from Launiupoko to Ukumehame



Project website:

[honoapiilanihwyimprovements.com](http://honoapiilanihwyimprovements.com)



Honoapi'ilani Highway Improvements

# Project Website

[Overview](#)[Info + Docs](#)[FAQs](#)[Videos](#)[Section 106](#)[Submit Comment](#)

EVENTS

## Scoping Report is Here!

Honoapi'ilani Highway Improvements Project's Scoping Report findings are now available to view.

Hawai'i Department of Transportation (HDOT) held meetings and accepted public comments during last year's Scoping Period, which were valuable in determining what we studied and how alternatives were developed.

[LEARN MORE ABOUT THE REPORT](#)

## We Want to Hear from You

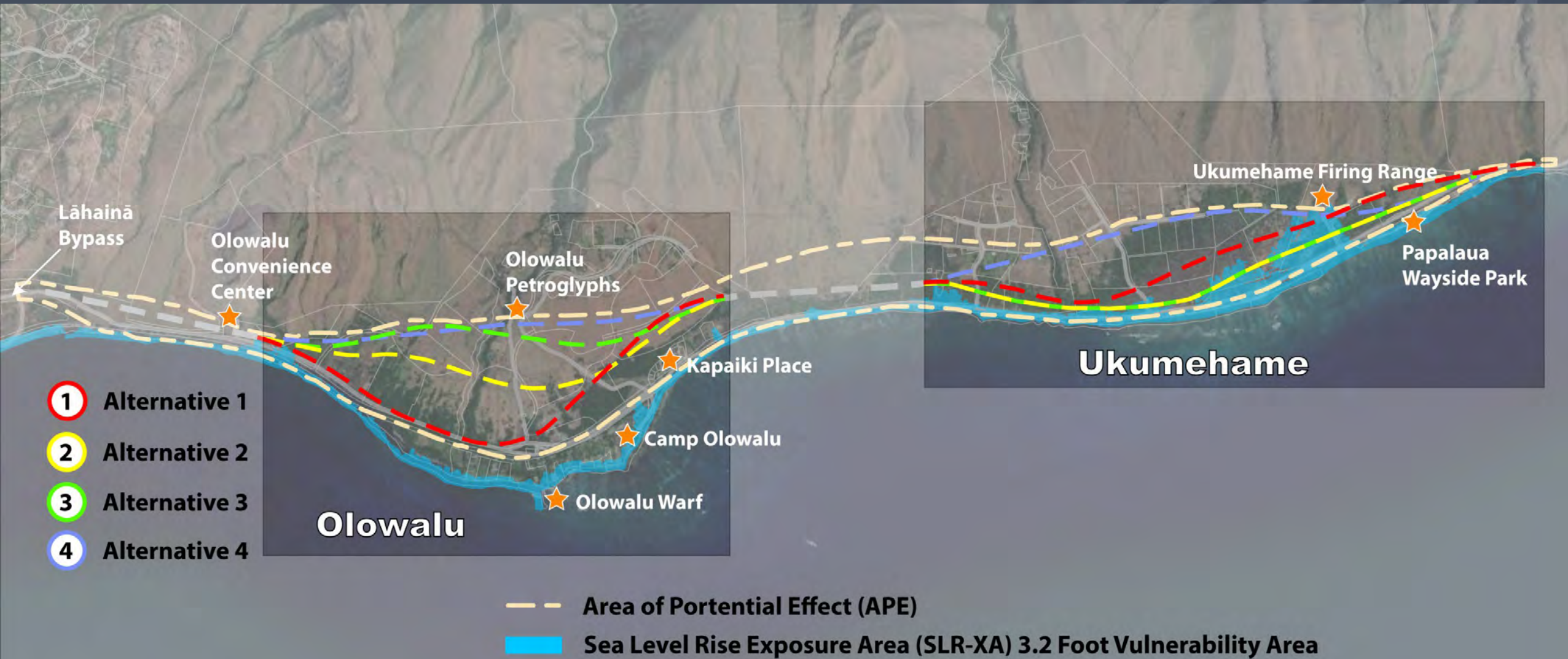
Our MetroQuest Online Survey is now closed, but you can still submit comments and questions using the [form at the bottom of the page](#). Your comments are valuable in determining what we study and how alternatives are developed.

## Project Details

[View Fact Sheet](#)[Submit A Comment](#)[Review Other Project Documentation](#)[Section 106: Meeting Details and Presentation](#)



# Alternatives Considered



# Project Studies

- Studies being conducted for all alignments of this project:
  - Archaeological Literature Study and Pedestrian Field Survey
  - Above ground field survey
  - Cultural Impact Study
  - Ethnographic Study
- Studies conducted on preferred alignment only:
  - Subsurface Testing for Archaeological Inventory Survey

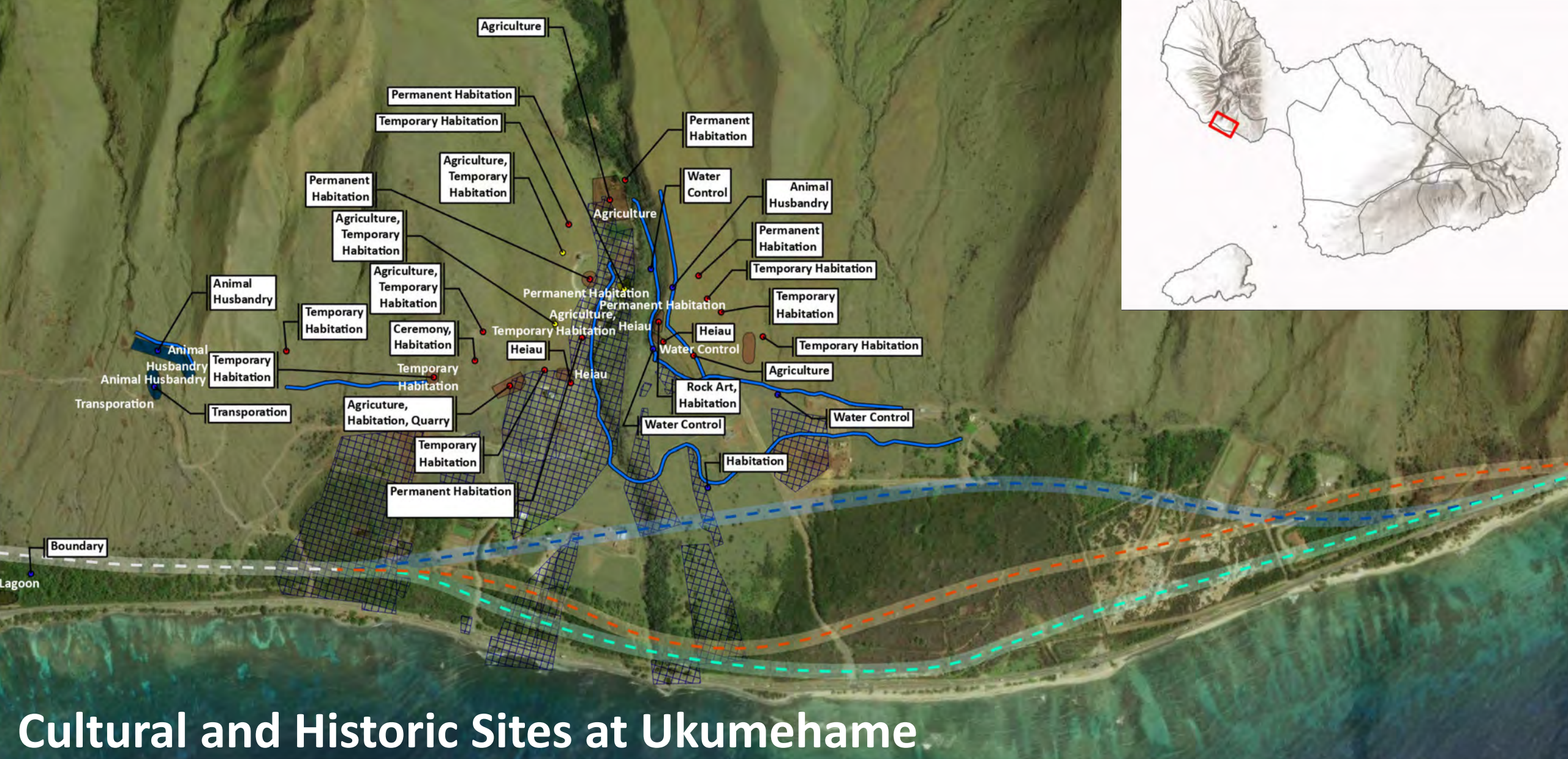






# Review of Previously Known Historic Property Locations



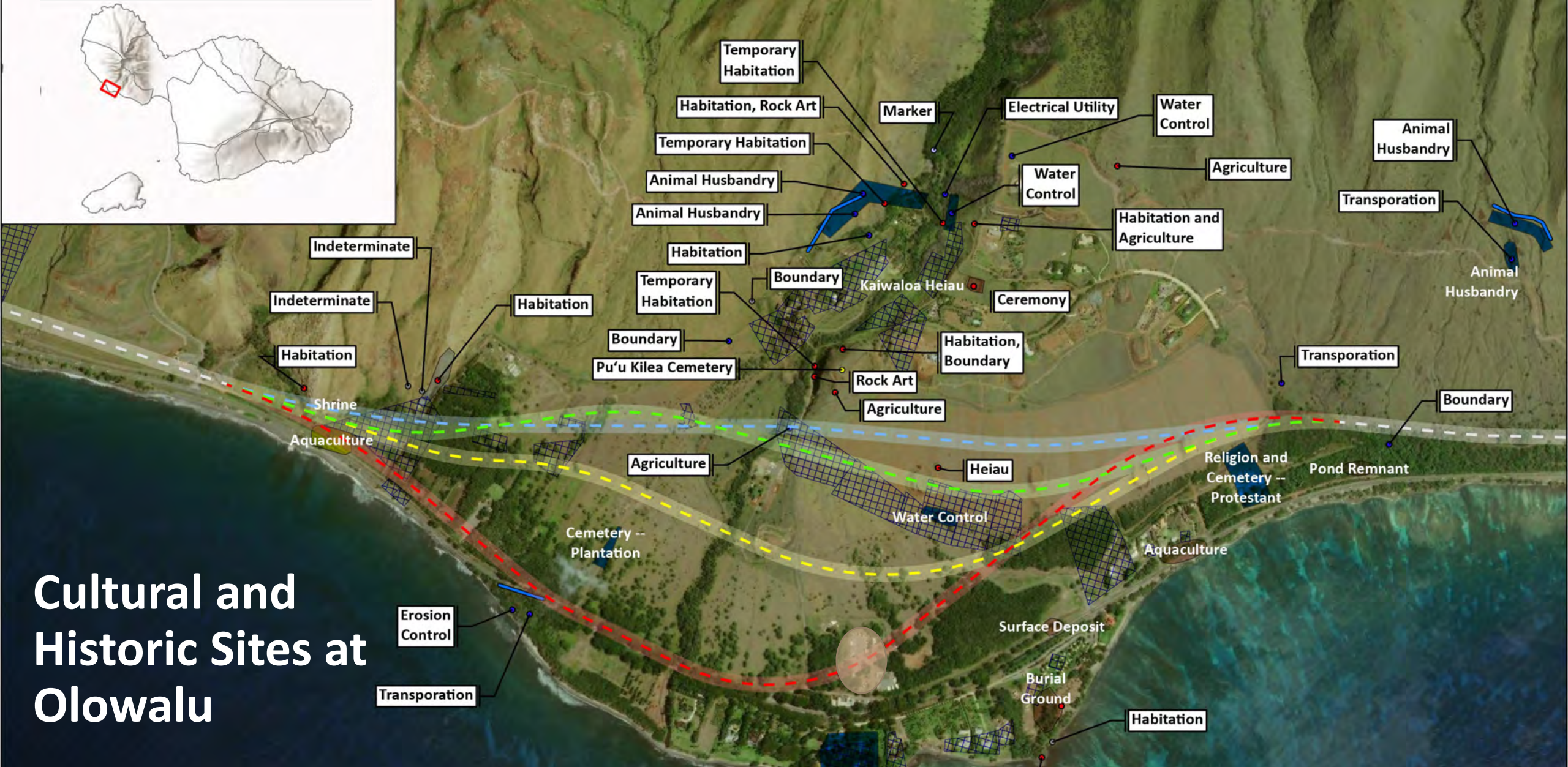


# Cultural and Historic Sites at Ukumehame

- |  |  |   |   |  |
|--|--|---|---|--|
| <ul style="list-style-type: none"> <li><span style="color: cyan;">- - -</span> Alternative 1</li> <li><span style="color: orange;">- - -</span> Alternative 2</li> <li><span style="color: blue;">- - -</span> Alternative 3</li> <li><span style="color: grey;">- - -</span> Merge</li> <li><span style="color: blue;">●</span> Historic</li> </ul> | <ul style="list-style-type: none"> <li><span style="color: blue;">●</span> Historic Ranch</li> <li><span style="color: blue;">●</span> Historic Sugar Plantation</li> <li><span style="color: red;">●</span> Pre-Contact</li> <li><span style="color: yellow;">●</span> Pre-Contact to Early Historic Sugar Plantation</li> <li><span style="color: yellow;">●</span> Pre-Contact to Historic</li> </ul> | <ul style="list-style-type: none"> <li><span style="color: blue;">—</span> Historic</li> <li><span style="color: blue;">—</span> Historic Ranch</li> <li><span style="color: blue;">—</span> Historic Sugar Plantation</li> <li><span style="color: blue;">■</span> Historic</li> <li><span style="color: blue;">■</span> Historic - Ranch</li> </ul> | <ul style="list-style-type: none"> <li><span style="color: blue;">■</span> Historic Ranch</li> <li><span style="color: blue;">■</span> Historic Sugar Plantation</li> <li><span style="color: pink;">■</span> Pre-Contact</li> <li><span style="color: yellow;">■</span> Pre-Contact to Early Historic Sugar Plantation</li> <li><span style="color: yellow;">■</span> Pre-Contact to Historic</li> </ul> | <ul style="list-style-type: none"> <li><span style="border: 1px solid blue; display: inline-block; width: 10px; height: 10px; background: repeating-linear-gradient(45deg, transparent, transparent 2px, blue 2px, blue 4px);"></span> Land Commission Awards</li> </ul> |
|--|--|---|---|--|



# Cultural and Historic Sites at Olowalu



|                     |                               |                             |                           |                             |                                 |                          |
|---------------------|-------------------------------|-----------------------------|---------------------------|-----------------------------|---------------------------------|--------------------------|
| ••• Alternative 1   | ● Historic                    | ● Historic Sugar Plantation | ● Pre-Contact to Historic | ■ Historic - Ranch          | ■ Pre-Contact                   | ■ Land Commission Awards |
| - - - Alternative 2 | ● Historic - Plantation       | ○ Indeterminate             | ■ Historic                | ■ Historic Plantation       | ■ Pre-Contact and Historic      |                          |
| - - - Alternative 3 | ● Historic - Sugar Plantation | ○ Indeterminate             | ■ Historic Ranch          | ■ Historic Ranch            | ■ Pre-Contact to Early Historic |                          |
| - - - Alternative 4 | ● Historic Plantation         | ● Pre-Contact               | ■ Early Historic          | ■ Historic Sugar Plantation |                                 |                          |
| — Merge             | ● Historic Ranch              | ● Pre-Contact and Historic  | ■ Historic                | ■ Indeterminate             |                                 |                          |



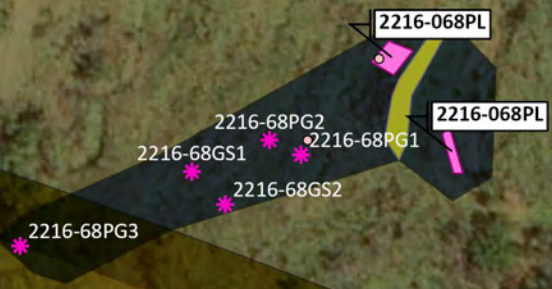
# Pedestrian Survey Results to Date







# Segment 1 – Ukumehame Firing Range Area



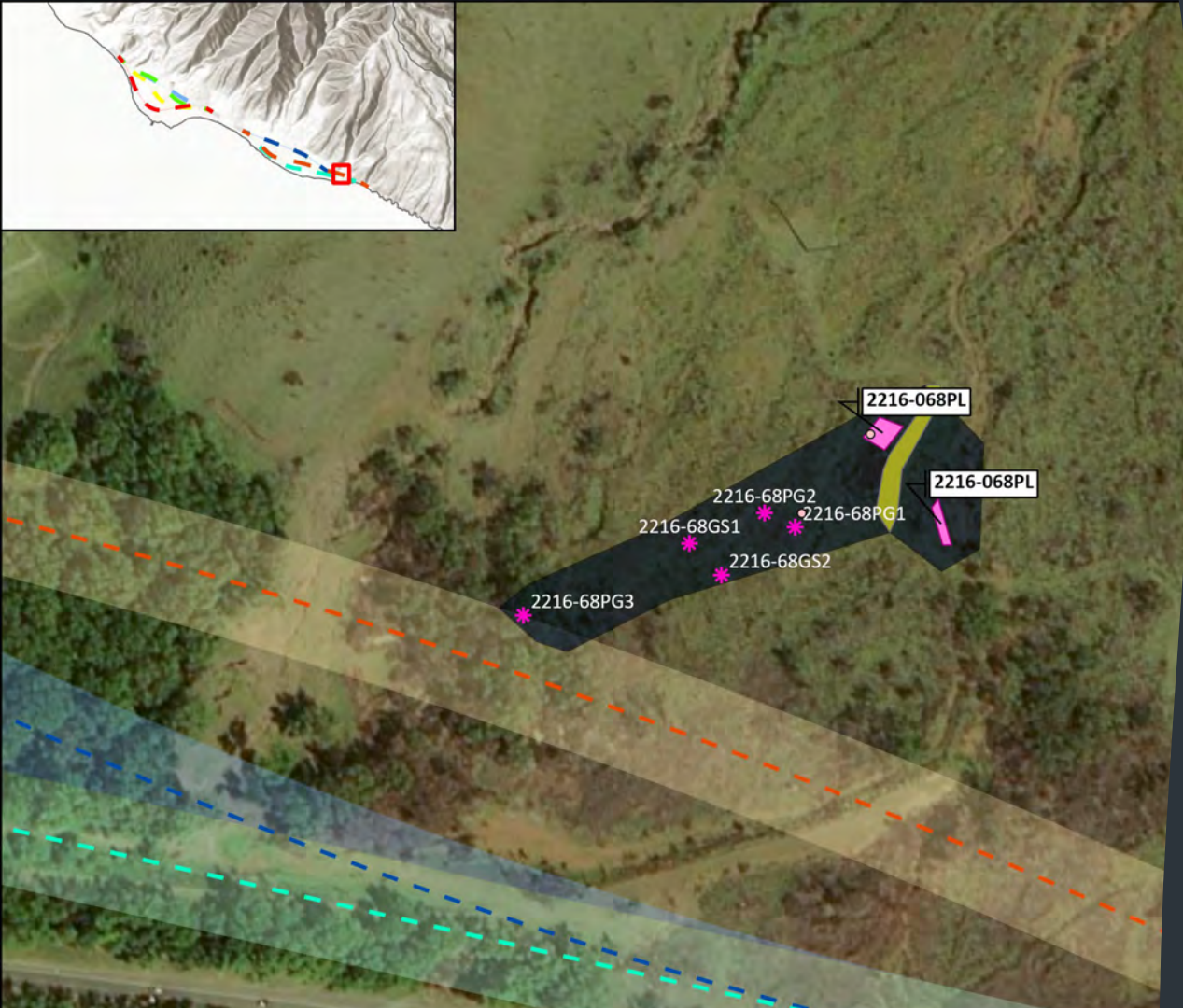
- \* HP Feature Datum
- o Generic Point
- Historic Property Extent (Surface Scatters, Complex Boundaries, etc)
- Areas of Late Historic or Modern Mass Grading (Borrow Pits, General Clearing Areas, Construction Related, etc.)
- Approximate Extent of Archaeological Complex -- Planning Only
- AA\_Survey\_Corridors
- - - Alternative 1
- - - Alternative 2
- - - Alternative 3
- 1,Ukumehame
- 2,Ukumehame
- 3,Ukumehame

0 30 60 120 180 240 Meters

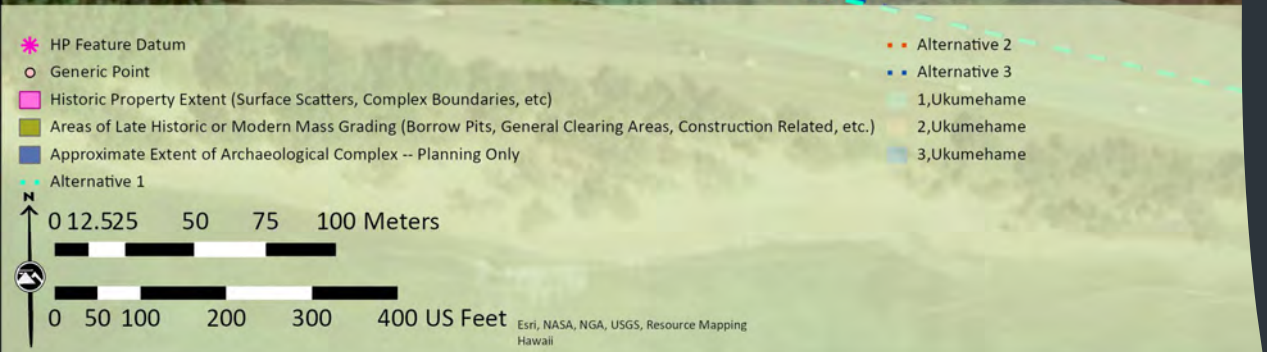
0 125 250 500 750 1,000 US Feet

Esri, NASA, NGA, USGS, FEMA, Resource Mapping Hawaii



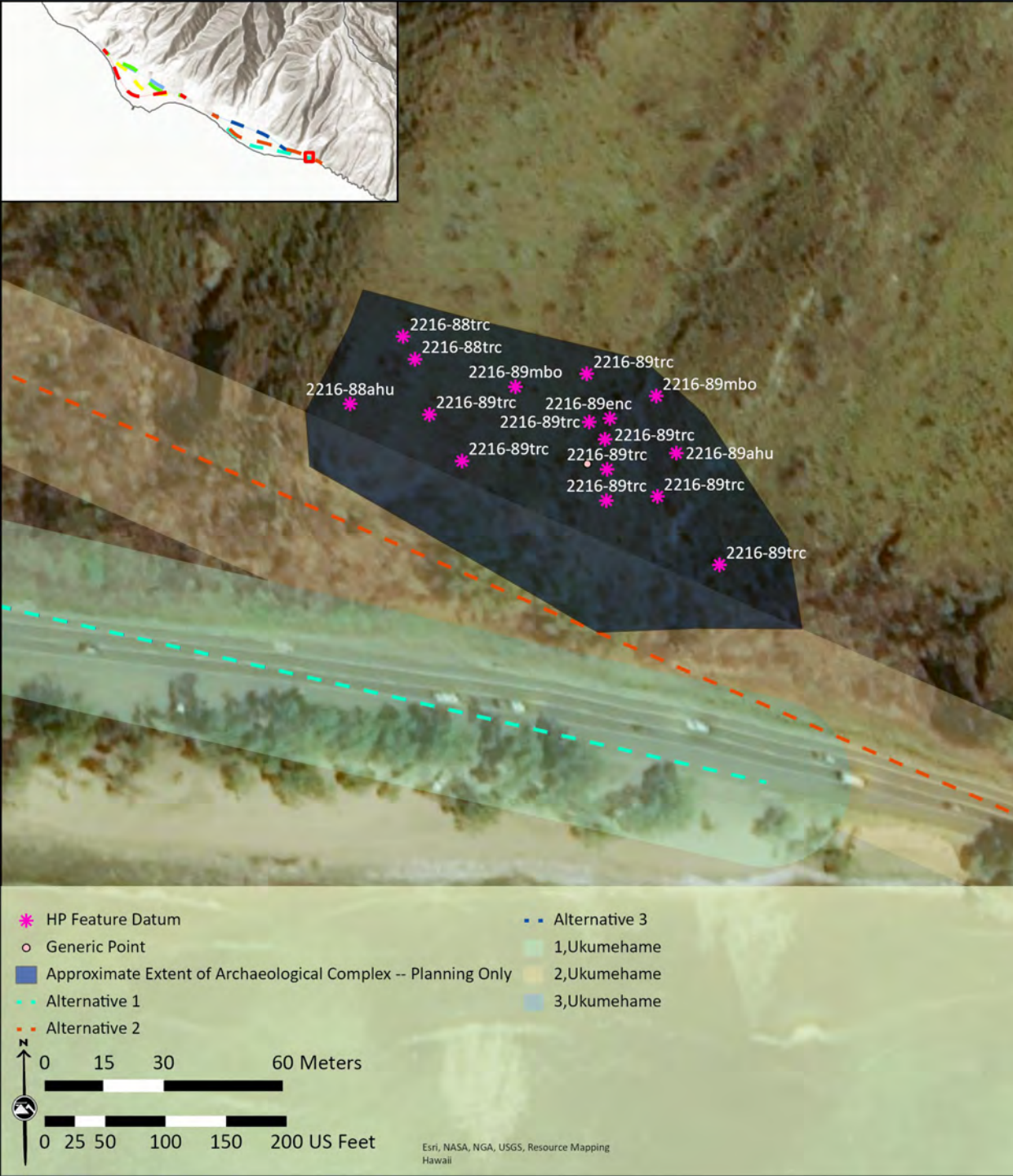


- Segment 1 – Ukumehame Firing Range Area
- AA2216-068 Habitation and Ceremonial Complex





- Segment 1 – Ukumehame Firing Range Area
- AA2216-089 Habitation and Ceremonial Complex





AA2216-017

# Segment 2 – Ukumehame

- Historic Property Extent (Surface Scatters, Complex Boundaries, etc)
- Generic Area
- Areas of Late Historic or Modern Mass Grading
- Land Commission Awards
- Alternative 1
- Alternative 2
- Alternative 3
- Merge
- 1,Ukumehame
- 2,Ukumehame
- 3,Ukumehame
- Merge,Merge



- Segment 2 – Ukumehame
- AA2216-017 Surface Scatter of Cultural Material





# Segment 3 – Between Ukumehame and Olowalu



2216-50F

2216-73ahu

2216-73hal

- HP Feature Datum
- Historic Property Extent (Surface Scatters, Complex Boundaries, etc)
- Generic Area
- Areas of Late Historic or Modern Mass Grading
- Alternative 1
- Alternative 1
- Alternative 2
- Alternative 2
- 1, Olowalu
- 1, Ukumehame
- 2, Olowalu
- 2, Ukumehame





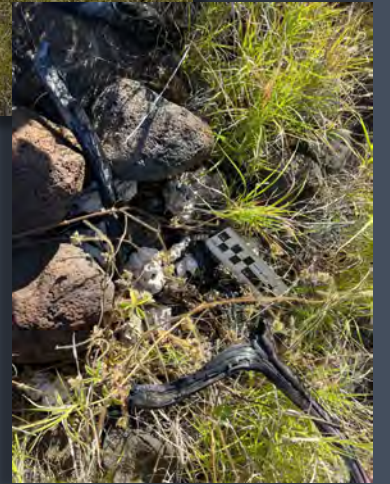
- Segment 3 – Between Ukumehame and Olowalu
- AA2216-050 Ceremonial and Habitation



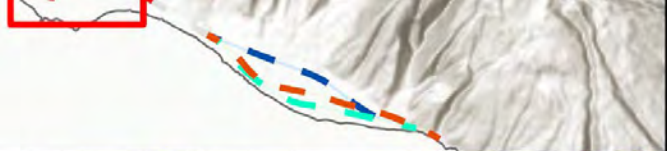




- Segment 3 – Between Ukumehame and Olowalu
- AA2216-073 Habitation



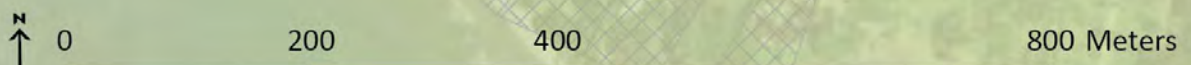




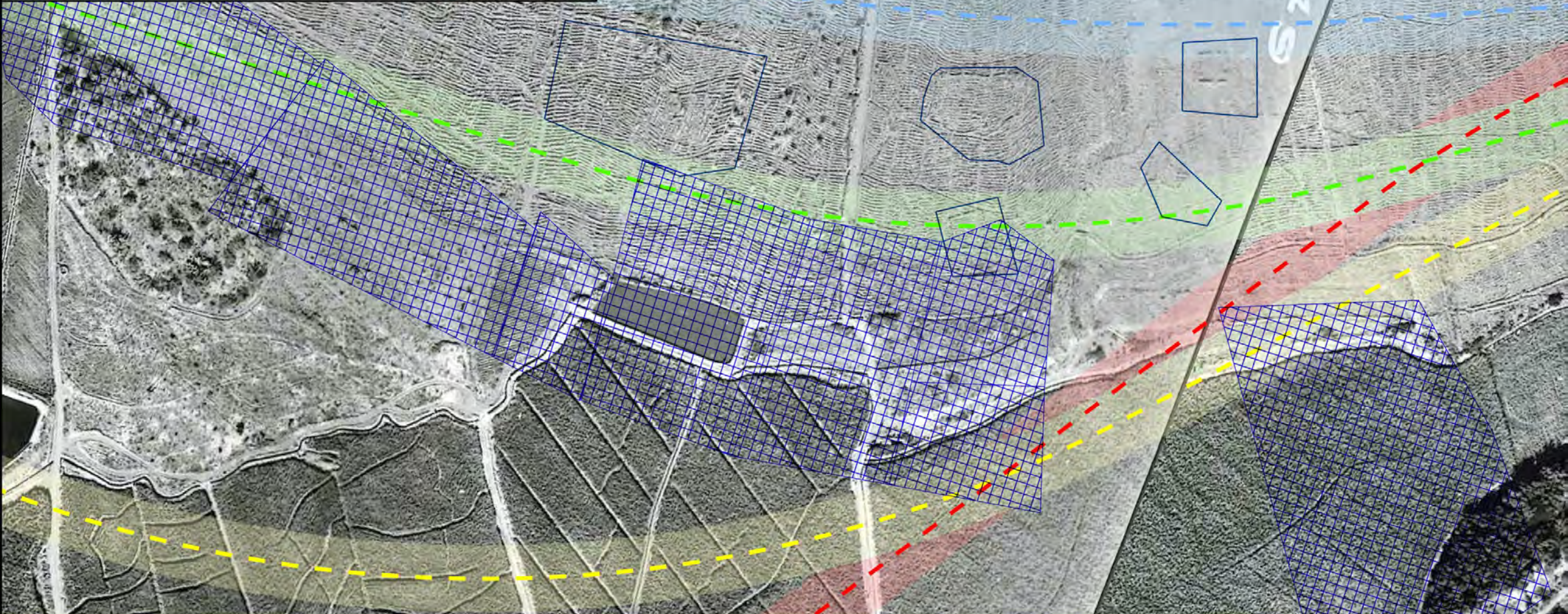
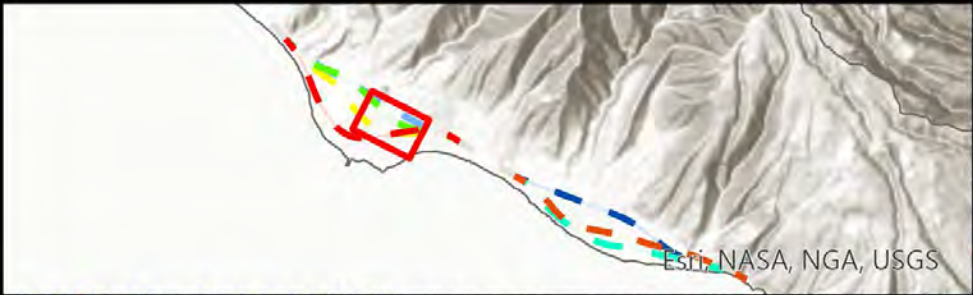
# Segment 4 - Olowalu

AA2216-033

- Former Enclosure Locations
- HP Feature Datum
- Land Commission Awards
- Alternative 1
- Alternative 2
- Alternative 3
- Alternative 4
- 1, Olowalu
- 2, Olowalu
- 3, Olowalu
- 4, Olowalu



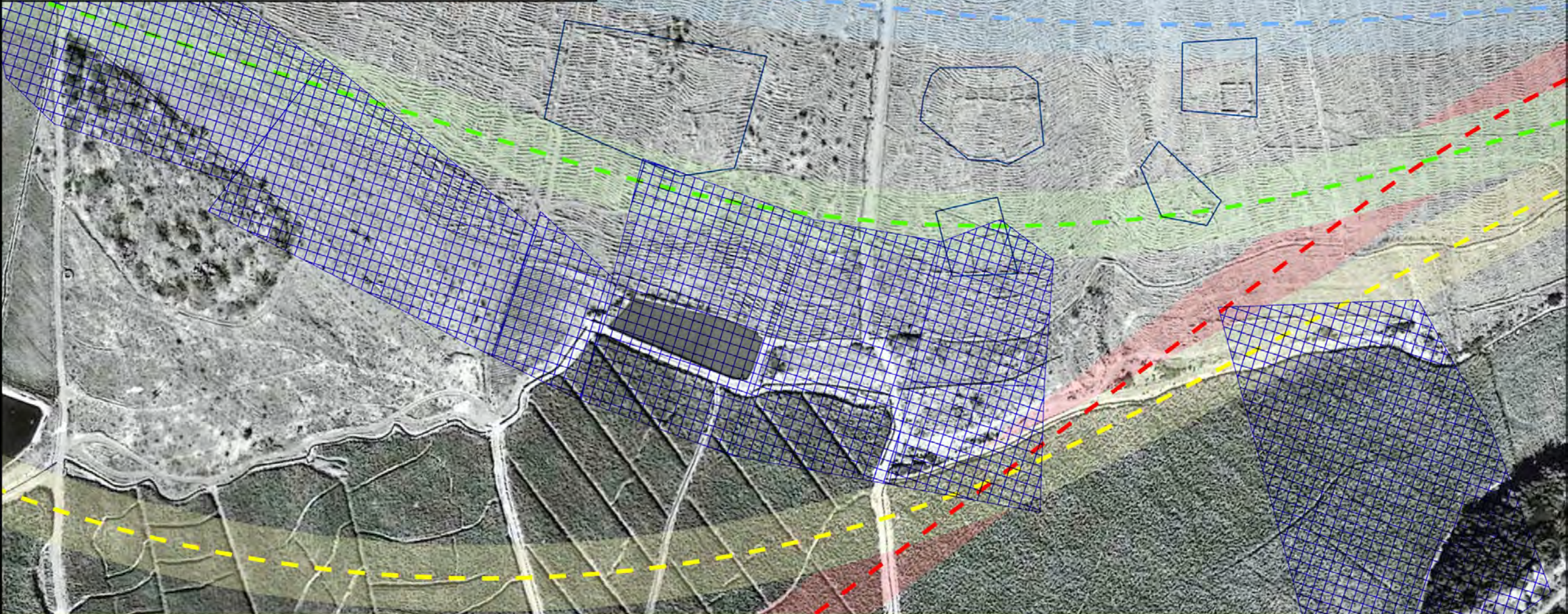
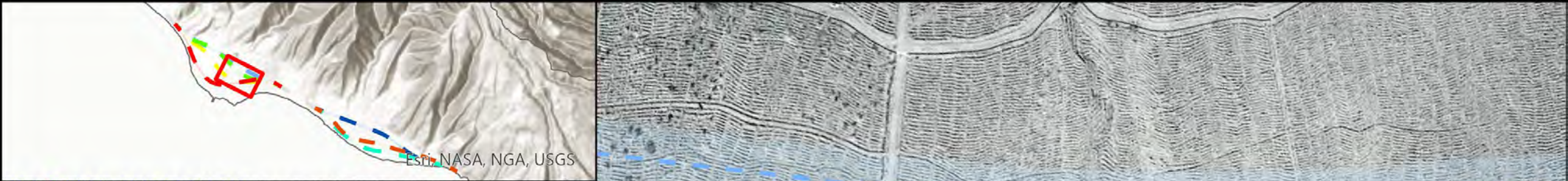




- Former Enclosure Locations
- Land Commission Awards
- Alternative 1
- Alternative 2
- Alternative 3
- 1, Olowalu
- 2, Olowalu
- 3, Olowalu

November 21, 1949 Flight Line 232-38, Used with Permission from RM Towill Corporation





- Former Enclosure Locations
- Land Commission Awards
- Alternative 1
- Alternative 2
- Alternative 3
- 1,Olowalu
- 2,Olowalu
- 3,Olowalu

November 21, 1949 Flight Line 232-39, Used with Permission from RM Towill Corporation





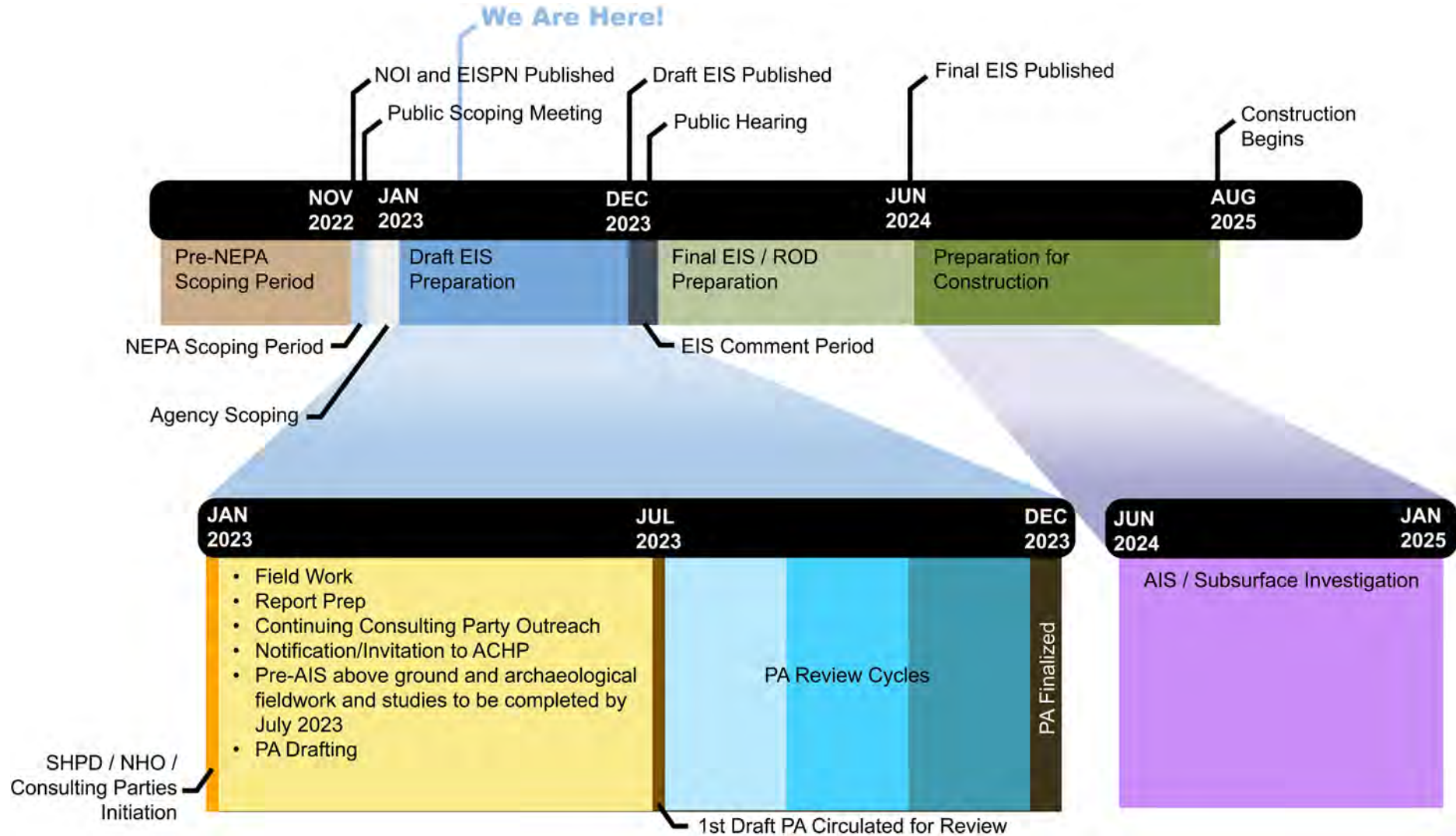
# Segment 5 – Olowalu to Launiupoko



|   |               |               |               |           |
|---|---------------|---------------|---------------|-----------|
| Former Enclosure Locations                    | Historic      | Historic      | Alternative 1 | 1,Olowalu |
| HP Feature Datum                              | Indeterminate | Indeterminate | Alternative 2 | 2,Olowalu |
| Areas of Late Historic or Modern Mass Grading | Pre-Contact   | Pre-Contact   | Alternative 3 | 3,Olowalu |



# Project Timeline





# Working together to protect Historic and Cultural Resources

- Mana‘o related to potential Cultural and Historic sites in the project area
- Traditional and customary practices which may be impacted by the project
- Participate in the development of the Programmatic Agreement





# Questions?



[www.honoapiilanihwyimprovements.com](http://www.honoapiilanihwyimprovements.com)



Honoapi'ilani Highway Improvements



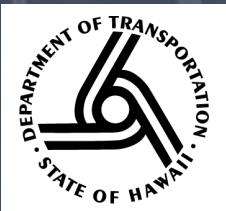
# Mahalo!

[www.honoapiilanihwyimprovements.com](http://www.honoapiilanihwyimprovements.com)

## Questions or Comments?

Contact: Pua Aiu, Cultural Resources Manager, HDOT  
[pua.aiu@hawaii.gov](mailto:pua.aiu@hawaii.gov)

[www.HonoapiilaniHwyImprovements.com](http://www.HonoapiilaniHwyImprovements.com)



Honoapi'ilani Highway  
Improvements